

THE NEXUS

OREGON'S SOCIAL WORK CONNECTION



Newsletter of the National Association of Social Workers, Oregon Chapter

Legislative Session Sees Mental Health Parity, Other Gains

By Maura C. Roche, Registered Lobbyist and Amy Reynolds, former NASW Intern

NASW of Oregon had some real successes at the close of the 2005 Oregon Legislative Assembly. The legislature closed upon final adjournment on August 5th. While there were wins on some longtime issues of interest to Oregon NASW, there are still some outstanding issues that will need to be taken up again on 2007.

Mental Health Parity

On Saturday, July 30, in an historic vote more than a decade in the making, the Oregon House of Representatives passed Mental Health Parity 59-1. After years of blocking this legislation based on its supposedly high cost, only one legislator chose to go on the record in opposition to the bill—Rep. Jeff Kropf (R-Sublimity).

Senate Bill 1 passed the Senate 23 to 6 with Senators Beyer, Ferrioli, George, Kruse, Nelson, and Charles Starr voting against. This bill had tremendous bipartisan support in both chambers and is now on its way to the Governor's Desk where he will sign it into law.

Women's Health Package Signed into Law for Good

Governor Kulongoski, with dozens of advocates and legislators looking on, signed HB 2497 and 2498 into law. HB 2497 was a reauthorization of coverage for mammography, PAP and pregnancy, which originally was passed into law in 1993. Due to a provision in the insurance code the law sunsets every three sessions and had to be renewed. The version passed this session lifted the

(continued on Page 4)



Gov. Kulongoski signs SB 1, creating mental health parity in Oregon.

Oregon NASW Board Welcomes New Members

The Oregon Chapter of NASW had its highest voter turnout in years for the Board of Directors election that was concluded in June. Ballots were returned by 155 members, which is over five times the number of ballots received the previous year. This increase in voting is believed to be due to the fact that ballots were mailed out in a separate mailing this year, rather than being included in the newsletter, as well as the fact that more people agreed to run for the Board this year, and there were therefore more contested races on the ballot.

Newly-Elected Board Members include:

Luana Berens	President-elect
Christine Hall	1 st Vice-President
Amy Reynolds	2 nd Vice-President
Larry Betcher	Region 1 Representative
Claire Corwin-Kordosky	Region 1 Representative
Anissa Rogers	Region 2 Representative
Vicki Wolff	Region 2 Representative
Dave Olson	Region 3 Representative
John Davis	Region 5 Representative
Margo Nelson	Student Representative, PSU
ReBecca Schwantes	Student Representative, U of P

In addition, at its July 23 meeting, the Board appointed Sara Westerfeld to fill the remaining year in the term of an open Region 2 Representative position. This means that for the first time in several years, all positions on the chapter's Board of Directors are filled. Thanks are due to the newly-elected members and to everyone who agreed to run for the Board this year. We also thank the chapter's Nominations Committee, which put a lot of hard work into recruiting and preparing this year's election slate.

You can find contact information for all Board members on pages 2 and 3 of this newsletter.

IN THIS ISSUE...	
STATE OF THE NATIONAL ASSOCIATION.....	6
DELEGATE ASSEMBLY APPROVES RESOLUTION ...	5
EVENTS COMMITTEE	7
ETHICS COMMITTEE	7
ROGUE DISTRICT	8
CONFERENCE REGISTRATION	20
CALL FOR PAPERS	23

From the President ...

Greetings to everyone in the Oregon Chapter. It's amazing to me that I'm preparing to write my first column of the second year as President. The time has gone very quickly. I continue to find it a joy and a great opportunity.

There were significant accomplishments during the past year. While this isn't a full "State of the Chapter," I want to touch on several of them. We're in the black as a Chapter and diversified our investments with the hard work of the Finance Committee. We had an extremely successful Statewide Conference, doubled our income from the previous year and have reestablished it as an annual event. We launched a PR & Marketing Committee, Private Practice Council, Elder Concerns & Disability Council and a Capitol District. Legislative Committee and our lobbyist worked hard in preparing our agenda and reviewing bills. And Mental Health Parity actually got passed! We've talked that we'll need a new No. 1 legislative priority next session.

I set four goals last year as President. Tops among them was a MEMBER OUTREACH program. This involved calling all the members in Chapter, thanking you for being members and then engaging in a conversation about the Chapter. We're approximately 85% done with the calls with various teams involved in the calling. It's been a terrific experience to talk to as many members as I have. We're got a lot of input, interest in creating some new districts and some great ideas. We'll be finished with this first step shortly. You should have gotten a call but, if you haven't, please call at the number listed below.

I wanted to move some BOARD MEETINGS outside the Portland Metro area as one way to reach out to the rest of the state. In March, Social Work Month, we were hosted at Holt International in Eugene. We also added a member Q & A session to the Board meeting and sent letters to local agencies. This year we plan, of our six Board meetings, one in Eugene and one either in Salem or Medford. Our Leadership Retreat is at Silver Falls State Park in September which includes a Board meeting.

We continue to pursue effective COALITIONS with other organizations whenever

possible and also to lay the groundwork for more agency presentations. One important activity along this line was the opportunity to attend the SOCIAL WORK CONGRESS last March. I was able to make an overview presentation to the PSU faculty in May.



Tom Hogan

What about goals for this year? Tops among them are AGENCY PRESENTATIONS. This involves talking about the Chapter and benefits of membership throughout the State. I'll work with the Membership Committee on this and help develop an agency database of social work agencies. We do not currently have a list or database of the social work agencies in Oregon. While this is a goal of mine, it's something that I hope we'll be able to inspire others to work on throughout the state. Agency presentations involves all of us, not just me as President. It's talking about social work and the Chapter. We have the tools to do it. I'll be writing more about this.

Another goal is forming a PAST PRESIDENTS' ADVISORY COUNCIL. This would help connect Past Presidents to the Chapter and function as an advisory group to the Chapter and the Board. Several past Presidents have indicated an interest so far. Finally, I want to look at TAKING INCREASED ISSUE POSITIONS. This goal became apparent in the member calling. Members would ask, "Well, what are you doing about..." The first one that comes to mind is poverty and the growing class division. On some of these the Association already has a policy. Others will be an opportunity for people to get involved to explore ideas and bring concepts to the Board for consideration and action.

A lot is going on in the Oregon Chapter!! I see and feel this all the time. As always, please call at 503-794-8190 or e-mail at janeandtom@comcast.net with questions, suggestions or offers for involvement. It's an honor to serve as your President.

Tom Hogan, President,
Oregon Chapter NASW

NASW Oregon Chapter

BOARD OF DIRECTORS

President:

Tom Hogan
janeandtom@comcast.net

President Elect

Luana Berens
lberens@comcast.net

1st Vice President

Christine Hall
cubanclancy@yahoo.com

2nd Vice President:

Amy Reynolds
adreynd@yaho.com

Secretary

B. Lee Coyne
luckycoyne@yahoo.com

Treasurer:

Casadi Marino
casadimario@hotmail.com

Student Representatives:

Rebecca Schwantes
rschwant@up.edu

Margo Nelson

dsnelson@easystreet.com

Region 1 Representatives

(Clatsop, Columbia, Tillamook, Washington, Yamhill and portions of Clackamas and Multnomah Counties)

Mark Holderbach

wakked@comcast.net

Larry Betcher

l.betcher@comcast.net

Claire Corwin-Kordosky

kordosky6769@msn.com

Region 2 Representatives

(Part of Multnomah and Clackamas Counties)

Anissa Rogers

rogers@up.edu

Vicki Wolff

mvwloff@comcast.net

Sara Westerfeld

ariellefay@yahoo.com

Region 3 Representatives

(Lincoln, Polk, Marion, Benton, Linn, Lane Counties)

Dave Olson

oyram@aol.com

Laurel Anderson

laurela@holtintl.org

Region 4 Representative

(Coos, Douglas, Curry, Josephine, Jackson, Klamath, Lake Counties)

Dennis McNamara

mcnamadp@jacksoncounty.org

Region 5 Representative

(Hood River, Wasco, Sherman, Gilliam, Morrow, Umatilla, Union, Wallowa, Baker, Jefferson, Deschutes, Crook, Wheeler, Grant, Harney, Malheur)

John Davis

johndavis@chwest.com

NATIONAL BOARD REPRESENTATIVE (REGION XII)

Mary Jane Fox
mjfox@fvcc.cc.mt.us

THE NEXUS: NASW OREGON CHAPTER NEWSLETTER (ISSN 133-6492)

is published quarterly for \$30.00 per year (included in dues) by the National Association of Social Workers Oregon Chapter at 7688 SW Capitol Hwy, Portland, Oregon 97219.

Periodicals postage paid at Portland, Oregon.

POSTMASTER: Send address changes to: NASW NEWSLETTER OREGON CHAPTER, 7688 SW Capitol Hwy, Portland, Oregon 97219

NASW Oregon Chapter

DISTRICT CHAIRS

Lane County District Chair
Laurel Anderson
laurela@holtintl.org

Rogue Valley District Chair
Gretchen Thiel
gthiel@pdx.edu

Capital Area District
Dave Olson
oyram@aol.com

South Coast District Chair - Open
Klamath Falls District Chair - Open
North Eastern District Chair - Open
Central Oregon District Chair - Open
North Coast District Chair - Open

COMMITTEE LEADERSHIP

Continuing Education
Dave Olson
oyram@aol.com

Elder Concerns & Disability
B. Lee Coyne
notcoy@netzero.net
Anissa Rogers
rogers@up.edu

Ethics
Krystal Ashling
kash@seadream.org

Katherine Oberholtzer
KB.Oberholtzer@oberholtz.com

Event Coordinating
Luana Berens
lberens@comcast.net

Executive
Tom Hogan
janeandtom@comcast.net

Finance
Casadi Marino
casadimarino@hotmail.com

Legislative
Mark McKechnie
Mark.mckechnie@comcast.nmet

Legislative Vice Chair
Sara Westerfeld
ariellefay@yahoo.com

Maternal Child
Leora Hughes
leora399@comcast.net

Membership
Amy Reynolds
adreyold@yahoo.com

Personnel
Christine Hall
cubanclancy@yahoo.com

Private Practice
Susan Pease Banitt
yogini4@comcast.net

Public Relations & Marketing
Christine Hall
cubanclancy@yahoo.com

School Social Work
Karen Ditmar-Bogucki
kditmar@msn.com

Social Work Political Action
Amy Stuczynski
amarie_fish@yahoo.com

2005 DELEGATE ASSEMBLY

NASW Delegate Assembly only happens every three years. Your representatives to the 2005 Delegate Assembly in Washington, DC were Luana Berens, President-Elect, Scott Manchester, Executive Director, and me as President. There have been some changes since I last went in 1999. One is that the number of elected delegates have been reduced from about 300 to about 200, making a more manageable number and reducing costs. Another is that Executive Directors, who are not voting delegates, now had microphone privileges. A third is the use of policy panels throughout the preceding year to provide more thoughtful review.

Delegate Assembly is a working meeting in that there are evening sessions and other meetings. Before the official opening, Luana Berens and I scheduled three lobbying appointments on Capitol Hill. There's another article on that in this Newsletter. Scott attended an Executive Directors' meeting, Luana training on the National Committee on Inquiry and I went to a Presidents' meeting.

What does Delegate Assembly do, you may be asking? It's organized into coalitions, optional but usually by geography, to do its business. We're part of the Western Coalition. We heard a Treasurer's Report and the Annual Program Report. There was the National Awards Ceremony.

One big function is reviewing and revising the Association's Policy statements. Approximately 1/3 of the Association's policies come up for review each Delegate Assembly. This year there were 14. I worked on the Physical Punishment of Children Policy for the Western Coalition. All passed, some with quite a bit of revision, others with only minor ones. There was also a new policy on Commercial Sex Workers and Social Work Practice. This was one of the hottest debated items at the Assembly but even-

tually passed after an attempt to refer it to committee.

Delegate Assembly also approves Bylaws Changes. All 12 proposed changes this year passed.

There also are Resolutions. There were 30 this year which are non-binding but give a sense of the will and the voice of the Assembly. Some are from the Board or the Resolutions Committee and are appreciation or commendations. Others are from members to get Delegate Assembly, if the resolution passes, on record on the item. One this year was written by Scott and co-sponsored by the Oregon and Alaska Chapters about placing items on the Delegate Assembly agenda. It was debated and passed 151-28. I co-authored with a California Delegate two on health care which both passed on the Consent Agenda (not debated). Another important one, I thought, was on reestablishing a NASW Peace, Social and Economic Justice Committee. It passed 133-47. The Western Coalition got an A+ and batted 100% on all the Resolutions it brought forward.

All in all it was a good Delegate Assembly with some good results. We will be giving more reports on it and would be happy to take any questions about the issues, resolutions or the role the Delegate Assembly plays in the Association.

Tom Hogan, President



Oregon Chapter delegates to the 2005 NASW Delegate Assembly included, from left to right, President-elect Luana Berens, President Tom Hogan, and Executive Director Scott Manchester.

(continued from Page 1)

sunset provision and made it permanent law. HB 2498 requires coverage of clinic breast exams, making Oregon the second state in the country to pass such legislation. This bill was drafted to avoid the sunset provision and make the law permanent as well.

Get the 2-1-1 for Social Services

This bill creates 2-1-1 as a statewide telephone number for access to health and human services. The bill directs the Office of Emergency Management to enter into contract with 2-1-1 system facilitator to design, implement and support a statewide 2-1-1 system. This law should help Oregonians in need get hooked up with services more quickly and provide much needed support for navigating the social services systems around the state. This bill passed both the House and Senate by wide margins and was signed into law by the Governor on August 1.

Board of Licensed Clinical Social Workers Budget

The Board of Licensed Clinical Social Workers budget passed both chambers without incident. This was a relief after some attempts earlier this session to create a consolidated health licensing board that would have combined many smaller boards together including everything from veterinarians to social workers to tattoo artists.

Health Services Commission Executive Appointment

Laurie Theodorou, MSW from Medford was appointed to the Health Services Commission replacing longtime representative, Kathy Savicki, MSW. The Health Services Commission oversees critical health policy decisions regarding the Oregon Health Plan. The Senate with 23 votes of support easily con-



From left to right, Scott Manchester, Oregon NASW Executive Director; Gov. Kulongoski, and Tom Hogan, Oregon NASW President, celebrate the signing of Oregon's mental health parity legislation.

firmed Ms. Theodorou. Her term of service will run from May 2, 2005 to May 1, 2009.



Maura C. Roche

Budget News

The Human Services budget has passed both the House and Senate. It was a mixture of good and bad news. Unfortunately, high profile legislation addressing methamphetamines has reallocated funds away from alcohol and drug treatment programs administered through DHS to corrections programs. And, three hundred caseworkers for children were cut from the budget and not restored. However, some solid restorations were made to senior and disabled programs much to the relief of advocates. For a complete overview of the budget go to the state web site at: <http://www.leg.state.or.us/comm/sms/SMS05Frameset.html>

The very last budget bill to pass that doles out any leftover funds has a number of items of interest to social workers:

- \$300,000 allocated to DHS for the workforce alcohol and drug prevention services contract
- \$400,000 allocated to the Oregon Student Assistance Commission
- \$130,000 allocated to state agencies for state employee compensation changes
- \$10,000 allocated to state agencies for home care worker collective bargaining changes
- \$2,000,000 allocated to Department of Community Colleges and Workforce Development
- \$1,500 allocated to State Board of Clinical Social Workers
- \$750,000 allocated to the Oregon Youth Authority for gang intervention services in east Multnomah County
- \$298,900, for grants to community-based agencies that provide domestic violence and sexual assault services.

Payday Loans

The bill seeking to reduce the interest rates that predatory lending institutions can charge, SB 545, passed the Senate with 17 aye votes and 13 nays. The legislature adjourned without the House of Representatives having taken action on it. NASW advocated for passage of this legislation because of concerns that these businesses prey on people who are in desperate need of funds and then charge them interest rates of 300-600%, causing debts to increase and making it virtually impossible to escape the cycle of poverty. Several other states have started regulating "payday loans" and NASW worked to add Oregon to the list.

(continued on Page 5)

Delegate Assembly Approves Oregon-Sponsored Resolution

In previous issues of *The Nexus*, we have reported on the Oregon Chapter's advocacy with NASW nationally, to try to provide for a lower dues rate for social workers experiencing financial hardship. After being rebuffed by the national Board of Directors, we tried to get the issue addressed by proposing an amendment to the NASW Bylaws. Bylaws amendments must be enacted by the Delegate Assembly. When we tried to get our proposal on the agenda for this year's Delegate Assembly, we were again denied by the national Board. We then had the option of getting on the agenda via a petition signed by 500 members in at least five chapters. But we were told by national staff that a new rule had been put in place that prohibits chapters from using any chapter resources— staff time, postage, printing, etc.— to collect petition signatures. This new rule meant that the Oregon Chapter, and several other chapters pursuing other issues, were prevented from getting their concerns on the agenda for the 2005 Delegate Assembly.

The Oregon Chapter therefore proposed a resolution at the Delegate Assembly that concluded, "BE IT RESOLVED that it is the recommendation of the 2005 Delegate Assembly that when a Chapter, through action of its Board of Directors, proposes an agenda item for the Delegate Assembly, chapter resources may be used in support of this agenda item, including the gathering of petition signatures for placement of the item on the agenda."

The Oregon Chapter delegation is pleased to report that on August 7, the final day of the Delegate Assembly, our resolution was approved overwhelmingly. Delegates from all over the country spoke in favor of our resolution. Although such resolutions are not binding, we hope that the strong vote at Delegate Assembly will result in dialogue between NASW chapters and the national office around ways in which chapters can get a hearing for their concerns and their members' concerns.

(continued from Page 4)

Civil Unions/Non-Discrimination

SB1000 amends all the current non-discrimination statutes to add sexual orientation to the list of groups that cannot be discriminated against (such as housing, employment and public accommodation), and creates civil unions to provide similar legal protections to same-sex families that other families in Oregon have through marriage.

In an historic vote, the Oregon Senate passed this law 19-10 on July 8th with Atkinson, Beyer, Ferrioli, George, Kruse, Charles Starr, Bruce Starr, Verger, Whitsett and Winters voting "No." A majority of legislators supported the passage of SB 1000, but one powerful legislator used her authority as Speaker to block legislators from even debating the issue. Karen Minnis changed a one hundred and forty year-old rule in order to prevent a procedural maneuver that would have allowed an up or down vote on the floor leading to its almost assured passage.

LOBBYING ON CAPITOL HILL

We had a free morning at the 2005 Delegate Assembly, so Luana Berens, our President-Elect, and I, set some lobbying appointments with members of the Oregon Congressional delegation. Since it turned out to be the August recess time, we met with staff rather than members. We were able to meet with Rep. Greg Walden's office, Senator Ron Wyden's office and Rep. Darlene Hooley's office.

We coordinated with the National office about what they had as priorities. The specific items we went to discuss were: 1) protecting Medicaid beneficiaries, 2) supporting the Social Work Medicare Equity Act being reintroduced and 3) Debt Forgiveness for Social Workers. This latter relates to debt reduction for loans social workers took to get their degrees. We had the NASW Legislative Agenda for the 109th Congress as well.

We probably as a Chapter have the least contact with Rep. Greg Walden and his office. His legislative aide was interested and attentive to the issues we brought, particularly when we said that we had several hundred members as constituents. The methamphetamine problem has become a bigger issue in his district. Senator Wyden and Rep. Hooley are friends of the Association and supporters of both Medicaid and Medicare. Senator Wyden's office in particular said they would look into the issues we raised.

It was very positive and time well spent. It's an opportunity to talk about the NASW and the local Chapter. We also talked with the other Congressional offices but couldn't work out appointments with everyone. We'd like to develop designated liaisons with each of the seven offices as a way to stay in touch with them all, raise our Chapter profile and talk about the issues that matter to us. We thought about all this and the step forward as we trudged up Capitol Hill in the high August humidity. We hope to be able to implement this in the near future and would be happy to have volunteers to work on it.

Tom Hogan, President



About 250 social workers from all over the country met in Washington, DC, from August 5-7 for the 2005 NASW Delegate Assembly.

State of the National Association

At the 2005 Delegate Assembly in Washington, DC, we heard the State of the Association Report from our national Executive Director, Dr. Elizabeth Clark. NASW has made a number of very positive gains, she reported, since the 2002 Delegate Assembly. I want to hit some of the highlights of her 30 minute report.

- The Association is celebrating our 50th Anniversary.
- The Association had a 50th Anniversary Gala, has a 50th Anniversary Exhibit and kicked off the National Public Education Campaign.
- Membership increased from 145,251 in 2002 to 150,530 in 2005. Of that, regular (full dues) members increased from 101,251 to 106,189.
- Our organization is solvent, financially sound and improved from 2002.
- Section growth (SPS Membership) increased from 9,092 in 2002 to 15,137 in 2005.

- 65,000 members have the Insurance Trust Liability Insurance.
- Member communication via NASW Member Link increased dramatically.
- 16,000 people completed courses on NASW WebEd.
- New Foundation funding is at \$3,261,000.
- We cosponsored the 2005 Social Work Congress.
- She listed an impressive number of other gains and collaborations.

Of course there are challenges and here are what she talked to us about.

INTERNAL CHALLENGES

- An aging membership. Our average age is 52.
- Leadership development. We need to get more people involved.
- Member retention.
- Workforce strategies.
- Fundraising for National Public Education

campaign. Only 1% of the members have contributed and this is a big problem in going to outside funders.

- Keeping up with technology.

EXTERNAL CHALLENGES

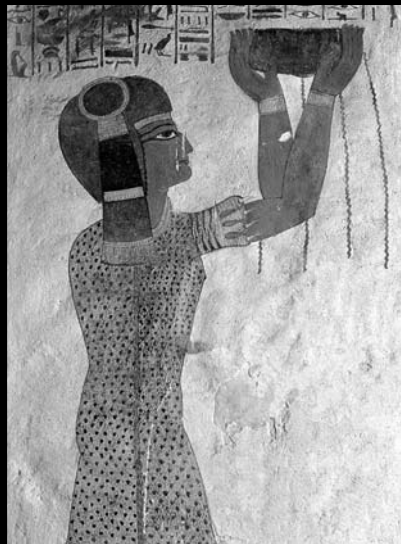
- Licensing.
- Increased competition.
- Attracting students to the field.
- Evidence based practice.
- Globalization.

This gave us a strong overview, I thought, of where we are as an organization at the national level. The challenges she reported sounded very real to me. I think we have these same issues here on a much smaller scale at the Chapter level and are things we need to discuss. One idea that Luana and I discussed was sponsoring forums on some relevant topics. In the meantime I have more information on Betsy Clark's report and felt as if we'd made good progress as an organization in the past three years.

Tom Hogan, President

THE ASSISI FOUNDATION PRESENTS

The Archetype of Sacrifice: Illusion or Transformation?



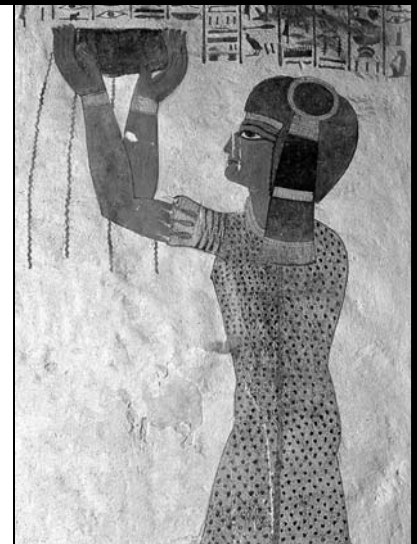
Join internationally recognized scholars from the fields of cultural anthropology, religion, and Jungian psychology

MICHAEL CONFORTI, PH.D.
CAROL DELANEY, PH.D.
DAVID L. MILLER, PH.D.



OCTOBER 28—30, 2005
PORTLAND, OREGON

Co-sponsored by Spring Journal and Spring Journal Books



Unique, In-Depth

**TWO-YEAR
CERTIFICATE PROGRAM**

An intensive exploration into the Archetypal Dynamics of Self-Organization.

Call today for information packet!

ASSISI
Conferences & Seminars



*Founded in 1989 by
Michael Conforti, Ph.D.*

TO REGISTER OR FOR MORE INFORMATION, PLEASE CONTACT US AT:

Tel: (802) 254-6220

Fax: (802) 258-2581

E-mail: assisi@together.net

www.assisiconferences.com

Upcoming Classes Sponsored by Events Committee+ 2006 Conference Planning

1) Fall trainings on a variety of topics, see registration form page 10.

October 21st **Prevention & Intervention Strategies with the Violent Client** by Marc Richmond in Portland. This class was researched and offered per requests from many members on working with clients who are potentially violent.

October 21st **Narrative & Collaborative Approaches in Therapy** by Susie Snyder in Pendleton. This class is the one promised to our Eastern Oregon members after the surveys in 2004.

November 5th **Establishing and Maintaining Healthy Boundaries in Therapy** by Krystal Ashling of Chapter Ethics Committee in Portland.

November 18th **The Role of Intuition in Psychotherapy** by Susan Pease Banitt in Portland. This is an expanded version of excellent short presentation at May 6th Chapter conference.

2) In response to member requests, we have been compiling information and sources of **training for Violence/Safety in the Workplace**, these include:

A) Free CEU's offered by Office of Mental Health and Addiction Services have been changed. **Richard Templeton's SAMSHA grant expired September 1st. Trainings are being sent out for regions to do in the state. As I get updates on where/when these trainings are held, they'll be posted on website or in newsletter.**

B) **Trauma Intervention Programs, Inc., Training Academies.** Cost \$50 & up. Approved by California licensing boards for mental health providers and nurses. More information at www.tipnational.org, www.tipnw.org or June Vining at 360-944-8918 or 503-823-3937 or jvining@fire.ci.portland.or.us.

C) **Crisis Prevention Institute, Inc.** 1-800-558-8976 or www.crisisprevention.com for a brochure on many study at home topics including conflict resolution, domestic violence, and the art of setting limits. They also offer seminars if organization requests.

3) Does **overcoming isolation in practice, vicarious traumatization, emotional and caregiver fatigue, revitalizing yourself and your practice, etc.** sound good to you?

Are you interested in a 1 ½ day retreat conference? It would include more than just informational lectures and **focus on developing strategies and processes to revitalize yourself.** Conference will be developed and advertised if enough people are interested. **Please call or email if interested:** 503-267-3507 or LLBerens@comcast.net.

4) Potential classes to be held in late fall/early winter: Collaborative Supervision and LCSW Exam Preparation Class (please contact chapter if you're interested in having this given in a different part of the state). Potential classes to be held in spring 2006: Group Therapy; Health Care/Insurance Reform; expanded versions of short presentations at May 6th conference including Not Knowing What to Do: The Experience of Being Stuck, The Missing Piece: Identifying and Treating ADHD in Adults, and Strengthening Couples and Families with Sustainable Relationship Tools. Also repeating classes: Collaborative Supervision, LCSW Prep Class, Ethics Committee offerings.

5) Planning for **2006 annual conference** has begun—See **Request for Proposals** on page 23. Theme: Social Workers Shape a New Reality: Building Strengths in the Face of Uncertainty.

4 tracks are: a) Addictions (ATOD, sex, gambling, wider than just alcohol & drugs),

b) violence & safety (domestic violence, child & elder abuse, again wide open),

c) direct clinical practice (including health, aging, etc),

d) supervision or administration (supervising clinicians, program development, program policy, program evaluations.)

Luana Berens, Events Committee Chair

Introducing the Multiracial Family Center by Adoption and Birth

MULTI RACIAL FAMILY ACTIVITY CENTER

Professional therapists, educators, community organizers, and adoptive parents are joining together to establish a supportive multi racial, multi cultural family activity and education center for the purpose of providing a safe environment for biracial children and adopted children to develop confidence and positive identity, overcoming the shame and low self esteem that is often experienced from interacting with the dominant European American culture. Volunteers, board members, and donations are now being recruited. The kick off activity will be a Poster Contest for children ages 4 to 7, 8 to 12, and 13 to 18 to promote the multi racial family center. The theme for the poster design is "My Multi Racial Family of the Future." Interested persons should contact Sara Sheets at 503-516-5774 or email at sarasheets@aol.com.

Call For Elder Concerns

To all chapter members that have had a particular case that involved an elderly client that was either abused or neglected (by family or paid caregiver), we need your help. We are seeking material for case studies. For privacy's sake, just use last initial of client. Please mail your comments to: Elder Concerns—Att: Lee Coyne, PO Box 5251, Salem, OR. 97304. Also, members please indicate which weekday at 6 pm is best for a meeting in October or November. *Lee Coyne*

Presenters Willing to Travel...

The presenters for "LCSW Exam Preparation Workshop" and "Establishing/Maintaining Healthy Boundaries" will happily travel to your area of Oregon if there are 10 or more registrants for their conference. Please call the chapter office, 503-452-8420 to let us know of your interest and area.

Supervision Group

Ongoing for clinicians needing to meet LCSW or LPC requirements as well as for those seeking to continue post-licensure consultation. Individual supervision in addition to group is also available. Our focus is to be of service to your total professional development, not just the refinement of clinical skills.

We offer a broad combined clinical background serving adults, adolescents, children and families. Additionally we provide a specialized care focus for trauma survivors and those with addiction issues. Experienced working within managed care, employee assistance, public agency and hospital systems and working with both short term and intensive longer term psychotherapy models.

For further information please contact co-leaders:

Steve Hand LCSW (503) 590-7029
Donald Mann LCSW (503) 228-1939

BC/40

Ethics Committee on New Child Custody Evaluation Standards

Oregon NASW was contacted by the Oregon LCSW Board in Early 2004 about the fact that most of the complaints that they were getting were about child custody evaluations. They asked if we could come up with some standards of practice. This concern was delegated to the Ethics Committee. At first, the committee had major questions about how we could do this since none of us were experts on this subject. We found out that there were no national standards of practice on this issue. We asked that experts in our area assist us in formulating this standard. Sharon James, Director of Multnomah County Family Court Services and Janice Ashe, LCSW from Washington County Conciliation were extremely helpful in the entire process. We used the NASW Code of Ethics as well as guidelines from British Columbia, the Association of Family and Conciliation Courts, and Louisiana. We had an all day work session and finished our formulation. The Model Standards were revised somewhat and then were available on the Website for two months. The Ethics Committee learned that by asking for help from experts in the area and using appropriate models and the NASW Code of Ethics we can come up with a professional model. The Ethics Committee has now finished the formulation of the Model Standards of Practice for Child Custody Evaluation. It has been presented to and accepted by the Oregon NASW Board. It will be presented to the Oregon LCSW Board. It is now considered the accepted standard of practice for Child Custody Evaluation in Oregon. It can be viewed on the Oregon NASW website. We will be looking at ways to distribute this so that everyone in Oregon is aware of these new standards.

Krystal Ashling, LCSW, Chair

Rogue District

The 4TH ANNUAL CONFERENCE OF JACKSON COUNTY COURTS AND COMMUNITY: CARING FOR CHILDREN AND FAMILIES will be held Friday, October 21, 2005, at the Smullin Center Auditorium in Medford, Oregon, from 8:00 a.m. - 5:00 p.m. The conference will feature DR. BRUCE D. PERRY, an internationally recognized authority in the area of child maltreatment and the impact of trauma and neglect on the developing brain.

The subject will be **CHILD NEGLECT AND BRAIN TRAUMA: PRACTICAL APPROACHES TO WORKING WITH CHILDREN AND YOUTH**. Brochures and registration information will be available in early August by contacting Becky Longie at the Commission for Children and Families, 541-774-7800 or longierl@jacksoncounty.org. Conference fee is \$30, which includes lunch, but space is limited so register early. 6 CEUs .

The Washington Chapter, NASW invites you to attend *"New Frontiers of the Mind: Exploring Trauma Treatment and the Brain"* presented by **Bessel Van Der Kolk, MD**, on September 9-10 in Bellevue, WA. Register at www.nasw-wa.org, 12 CEUs.

NCP - PORTLAND PRESENTS

The Northwest Center for Psychoanalysis - Portland PRESENTS

Agency and Sexuality in Psychoanalytic Treatment

Jonathan Slavin, Ph.D., ABPP

Saturday, September 10th, 2005

9:00am to 3:45pm, 5.5 CE hours

\$120 General, \$95 Psychoanalytic Candidates, \$15 Students

When the Picture Doesn't Fit the Frame: A Relational Reconsideration of Frame Theory

Anthony Bass, Ph.D.

Saturday October 15th, 2005

9:00am to 1:00pm, 4 CE hours

\$80 General, \$65 Psychoanalytic Candidates, \$15 Students

Events are held at Doernbecher Children's Hospital at OHSU, Marion Miller Auditorium
Contact Patti Lahn, MSW, at 503-223-2493,

More information on the web at

www.ncpportland.org

PROGRAMS for MEN

- Men's Therapy Group
- Relationship Skills Group
- Domestic Violence Intervention Groups



Call us to find out more
about these programs **503-235-3433**

BP/8

Existential-Humanistic Training & Case Consultation Group

Based Upon
The Art of the Psychotherapist
by James Bugental, Ph.D.

Starts mid-October 2005 -- 40 CEUs available
Co-sponsored by ORCA under NBCC Provider # 2038

Facilitator: Bob Edelstein, LMFT, MFT 503-288-3967

Comprehensive Eating Disorder Treatment

503-226-9061

Individual, Family & Group Therapy

Free Support Groups:
One for Families & One for Sufferers
Consultation & Inservices
Steps to Recovery Pamphlets

David Leventer, LPC, LMFT
Joyce A. Korschgen, LPC



State Certified Mental Health Center
818 NW 17th Avenue • Portland, Oregon 97209 • 503-226-9061
www.abwcounseling.com

THE 23rd ANNUAL OREGON COAST SUPERVISION GROUP IN PSYCHOTHERAPY AND HYPNOTHERAPY

Presenters: Joan Berry, LCSW, Stephen R. Beck, LCSW

When: October 19th – 23rd

Location: Casa Pacifica (ocean front), in Arch Cape, Oregon

CE: 38 HOURS (pending)

Cost: \$375 (includes training, lodging, and meals)

Size: Limited to 12 participants

Contact: Stephen Beck, 503-280-8904, lesbeck@spiritone.com

The 23rd meeting of the OCS will explore the nature of trance in clinical experience. Trance will be explored as both a defensive organization (symptom) and as a generative attempt at staying true to the essence of one's soul. Specific attention will be paid to how the therapist can 'sponsor' connected movement between the trance state and the normal experience of the self while facilitating /sponsoring integration of the trance phenomenon into a fuller experience of the self in the world

Participants will be supervised in the use of *first* (directive/indirective) and *second generation* (relational) Ericksonian Hypnotherapeutic techniques as a bridge to understanding and valuing client trances. Emphasis will be on supporting the therapist 'presence' while maintaining therapeutic boundaries as the therapist sponsors and develops the therapeutic conversation with the client.

Although this is not a course on "how to do" hypnosis, beginning level hypnotherapists will have ample opportunity to practice their skills and the approaches presented in a supportive community of therapist and seasoned teachers.

So Supervision *is* a 'residential' gathering where participants will get training and supervision in their clinical work with clients. It is also a time to be witnessed for all that you are as therapist and to reflect and set intention about how one would like to have their practice develop over the next year.

The trainers are long time students of Stephen Gilligan, PhD, a student of Milton Erickson and Gregory Bateson and have 50+ years of cumulative experience in using Ericksonian based approaches, as well as expertise in working with sexual abuse, dissociative disorders, and using EMDR and energy based techniques. They value the unique voice of each therapist and will offer this supportive training environment to sponsor the presence and voice of each participant.

Joan has worked in mental health for 30 years; in patient psych units, ER social work, Pediatric social work, home health, hospice, and private practice treating child and adult trauma survivors. She began studying hypnosis in 1981. In the past five years of her practice she has enjoyed learning energy psych techniques. She is a Diplomat of the National Board of Certified Clinical Hypnotherapist and a Clinical Diplomat with the National Board of Examiners in Clinical Social Work. She works as a consultant and is in private practice.

Stephen has worked in community mental health for the past 25 years; in community corrections, with the chronically mentally ill, with runaway youth, and has been in private practice since 1985, working with individuals, couples, and families— though he specializes in sexual abuse, dissociative disorders, and issues involving end of life and grief. He offers workshops in Self Relations Psychotherapy, retreats for hospice workers, and Enlightenment Intensive Retreats around the country with Carol Lankton, MA.

OREGON CHAPTER, NASW SPONSORS THE FOLLOWING CONFERENCES:

October 21, 8:45-4:30, "Prevention and Intervention Strategies With the Violent Client" presented by Marc Richmond, MS, held in MOB West, Legacy Emanuel Hospital, Portland. This conference is approved for 6 hrs of CE.

Marc Richmond, M.S., will be teaching a workshop on "Prevention and Intervention Strategies with the Violent Client." Mr. Richmond has over 20 years experience in providing counseling and psycho-educational services to clients with anger management difficulties. He has taught 'How to Handle the Violent Client' at Chemeketa Community College for the past 7 years. Oregon Chapter's conference will focus on the following learning objectives: 1. Participants will learn through a reflective learning process what their strengths and challenges are in working with violent clients. 2. Participants will learn how to incorporate the cognitive model in the treatment process with the violent client. 3. Participants will learn how to establish and maintain a work setting that emphasizes prevention and safety for all employees. 4. Participants will learn intervention strategies that work with violent clients. 5. Participants will learn how to establish treatment plans that are specific to violent clients.

Marc Richmond, M.S. has provided counseling and psycho educational services to at risk youth and adults in institutional and outpatient settings for over 20 years. He has specialized in working with clients that have anger management difficulties that have often resulted in violent behavior. Marc received his graduate degrees in Corrections from Chico State University in 1980 and in Management from Marylhurst College in 1991.

October 21, 8:30-4:30, "Narrative & Collaborative Approaches" presented by Susie Snyder, LCSW, held in the Blues Room, St. Anthony Hospital, Pendleton. This conference is providing 6 hrs of CE.

This conference will provide an overview of narrative, solution focused and other collaborative theories, a delineation of core strategies and techniques from each of these approaches. Also it will cover applications to various populations and problems with special attention to children and families. It will include demonstration and training in specific skills, case examples and questions/answers relating to integration and application. Participants will leave this workshop with useful perspectives and hands on tools that will provide inspiration, hope and efficacy.

Susie Snyder, LCSW, is currently an Assistant Professor at PSU Graduate School of Social Work and has over twelve years experience as therapist, consultant and supervisor in private practice. Her areas of expertise include clinical supervision, narrative therapy and clinical social work with children, adolescents and families. Her background includes extensive work in community mental health and school settings, and she has provided trainings throughout the United States.

November 5, 8:30-12:45, "Establishing/Maintaining Healthy Boundaries" presented by Krystal Ashling, LCSW, in room 1077, Legacy Emanuel Hospital, Portland. This conference has been approved for 3.5 hrs.

Have you ever had an encounter with a patient/client that made you uneasy? Would you like to have some information about what to do if you happen to run into a patient/client outside of the clinical setting? There may be times and instances when either the professional or the client makes that step over the

boundary line. How do you, as a professional, make ethical decisions about this critical issue? While there are few hard and fast rules (which will be covered) there are indicators that can tell you when you are getting off track. This workshop will give you tools for ethical decision-making when encountering boundary issues. Topics will cover: defining boundaries, the power differential, Code of Ethics, boundary crossings, boundary violations and why they happen, documentation, cultural issues and establishing a plan for meeting your own needs in a healthy way. Please bring your own boundary questions and learn ways to handle these encounters in an ethical manner.

*** (Presenter Krystal Ashling is willing to bring this workshop to your area of the state. If there are more than 10 people who would attend, please email Krystal Ashling at kash@seadream.org to work out details.)

Krystal Ashling, LCSW, ACSW, has worked with seniors since 1983, first as a certified nursing assistant and then moving into social work in nursing homes. She supervised many social workers and evaluated nursing home social services programs. She received a Certificate in Ethics from Linfield College and has been a member of Southwest Washington Medical Center Ethics Committee for 7 years. In 1993 she became chair of the Ethics Committee of Oregon Chapter, NASW. Ms. Ashling has worked at Hospice Southwest since 1995 where her caseload is 90% elderly. Much of her work consists of bereavement counseling and solving care-giving concerns.

November 18, 8:30-4:30, "The Role and Uses of Intuition in Psychotherapy" presented by Susan Pease Bannitt, LCSW, in 1700 Lorenzen, Legacy Emanuel Hospital, Portland. This conference has been approved for 6 hrs. of CE.

Participants should leave this training with learning objectives as they relate to the practice setting of clinical social work such as: expanding clinician's awareness of conscious and unconscious uses of intuition in practice; begin dialogue and "coming out process" of what the internal process of psychotherapy looks like especially the more subtle uses of the mind; clinicians will receive practical, "hands on" techniques for refining the use of intuition in psychotherapy; understand different cultural contexts for the use and understanding of intuition for healing practice of the mind; and through a revisionist approach to Western psychotherapy and psychological development, participants will be able to discuss the elusive yet pervasive role of intuition from the inception of Western psychological concepts and practices.

Susan Pease Bannitt, LCSW has worked in human services for 30 years and has been a practicing psychodynamic psychotherapist in many different settings since 1989. She has been involved in yoga and meditation since 1987 and is a certified yoga instructor. In the last 6 years she has had the opportunity to study Vedanta and Shamanism with two different teachers. She has also traveled and studied Vedantic concepts of the mind in India. It is her great privilege to facilitate the opening of practitioners and patients to deeper, clearer and subtler levels of the mind and Self.

CONFERENCE REGISTRATION FORM			
Copy or clip form or register and pay by credit card at www.acteva.com/go/nasworegon			
Name _____	email address _____		
Address _____	City _____	State _____	Zip _____
Phone home () _____	work () _____	fax () _____	
Conference Title(s): _____			
Registration:			
6 hours:			
Member	\$100	Non-member	\$125
Unemployed/Retired Member	\$60		\$ 75
Student member	\$15		\$ 30
Member & Non-Member group rate:	3-9 \$85 each	10+	\$75 each
If registering less than 2 weeks before conference:			
Member	\$110		\$135
(remaining rates remain the same)			
3.5 hours:			
Member	\$55	Non-member	\$70
Unemployed/Retired Member	\$35		\$45
Student member	\$10		\$15
Member & Non-Member group rate:	3-9 \$40 each	10+	\$35 each
If registering less than 2 weeks before conference:			
Member	\$65	Non-member	\$80
(remaining rates remain the same)			

Members: Refer a non-member to join NASW the day of the workshop and receive a coupon good for 20% off the member price of the next NASW sponsored workshop.

Non-members who join NASW the day of the workshop (application and check must be given to the registration volunteer) will be given a 40% discount from the member rate of the workshop.

OPC

oregon psychoanalytic center

providing mental health professionals a wide range of continuing education programs as well as formal psychoanalytic training



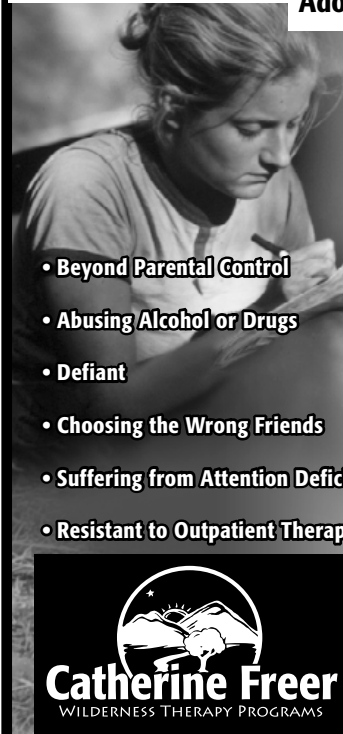
www.oregonpsychoanalytic.org
or 503.229.0175 for details



attend our informational open houses
tuesday, september 27, 2005, 7:30pm @ opc
tuesday, march 7, 2006, 7:30pm @ opc

Changes that Last a Lifetime

Adolescent Treatment Programs



Partnership in Planning

Regular communication to referring professionals and cross referrals

Meeting Individual Needs

21 and 51-day wilderness therapy programs, therapeutic outdoor school, transition home program

Family Reunification

Daylong multi-family meetings and individual family consultation

Lasting Results

Longitudinal study demonstrates that 90 percent of graduates report wilderness treatment still effective two years later

A Healthy Environment

Stabilization, clinical assessment, and supervision

- Beyond Parental Control
- Abusing Alcohol or Drugs
- Defiant
- Choosing the Wrong Friends
- Suffering from Attention Deficit
- Resistant to Outpatient Therapy



(800) 390-3983
cfreer.com

JCAHO accredited and licensed by the State of Oregon, Oregon Office of Alcohol and Drug Programs, and the Oregon Office of Mental Health Services

Need CEUs for license renewal?

Want professional and dynamic continuing education courses available to you anytime? Try **Social Work p.r.n.'s Online CEU program**, offering social workers practice relevant material at affordable prices with the utmost in scheduling flexibility. *Not all online offerings are the same – there's a difference with Social Work p.r.n.!* If you have participated in online courses before and found the experience to be less than satisfying – reading through hours of “dry” material on your own, you will enjoy the difference in Social Work p.r.n.'s online offerings. Our Internet-delivered courses are crafted in audio format (some with video), closely matching a live presentation. Technology allows registrants to participate in the course at their convenience and a CEU certificate is issued electronically upon completion. Most important, Social Work p.r.n. is an authorized

Approved Continuing Education provider by the Association of Social Work Boards.

To register or for more information go to www.socialworkprn.com and click on the **Online CEUs** link.

Social Work p.r.n. is a nationwide company that provides temporary, temp-to-hire and permanent placement services for social work professionals. For more information visit our web site at www.socialworkprn.com or contact our Corporate Office at 800-595-9648 to discuss franchise opportunities in your area.



Social Work p.r.n.®
Good People... Good Value

**Online CEUs
Now Available!**

For more information log on to
www.socialworkprn.com

800-595-9648 • socialworkprn.com

EMPLOYMENT

LEGACY HOSPITAL'S JOB LINE: 503-833-3236

NASW JobLink: The Social Work Career Center:
www.socialworkers.org/joblinks/default.asp

WASHINGTON COUNTY JOB OPPORTUNITIES:
www.co.washington.or.us

Visit the Human Services Council website at
www.humanservicescouncil.com for current positions available.

Clinical Services Supervisor, adult outpatient clinic of Lane County Mental Health. To join clinic team in Eugene. For information: www.lanecounty.org/Jobs/JobInfo.aspx?jid=216. (apply by 9/23)

Mental Health Specialist 3- for the outpatient treatment unit of the Mental Health Division of Douglas County's Health and Social Services Department. Contact Douglas County Human Resources, courthouse, Room 322, Roseburg, OR 97470. Job Line 541-440-6291, Human Resources 541-440-4405, TDD 541-440-6041. www.co.douglas.or.us/hr

Family & Marriage Life Coach - Pathway Coaching, a faith-based organization associated with Hope Family Services is seeking a contract MSW. Responsibilities to include assessing coaching or mental health needs, providing Life Coaching services by phone or face-to-face, personality inventory administration & feedback. Contact coach@pathwaycoaching.com

Parenting Consultant -PT- Parenting Program - 20 hrs/week. MSW or BA with five years exp. Send resume to: Volunteers of America of Oregon Parenting Program, 217 SE 8th Ave, Portland, OR 97214. kdavis@voa.or.org

Case manager -FT- assist functionally impaired, disabled adults over 18 and older adults to obtain and effectively use in-home and community diverse / bilingual based services in order to remain independent in their homes. Duties include functional assessment, service plan development and implementation, reassessment, service authorization, resource coordination, termination planning, case monitoring and documentation. Bi-lingual Russian speaking skills are desired but not required. This position is based in the Vancouver Office and the individual selected will work with the elderly and adults with disabilities living at home within the Clark County area. Contact Human Resources Manager/confidential, Case Manager Position, Human Services Council, 7414 NE Hazel Dell Ave, Vancouver, WA 98665-8325, 360-694-6577 Fax: 360-694-6716, www.humanservicescouncil.com

NASW RECOMMENDED MINIMUM SALARIES

DEGREE/LEVEL & SALARY

Baccalaureate in Social Work - \$25,000

Masters degree in Social Work - \$30,000

MSW plus two years experience - \$35,000

Advanced professional - \$45,000+

(DSW/MSW plus special expertise, administrative level)

These recommendations are purely advisory. They are not intended to suggest any understanding that NASW members will or must adopt them. Each member is free to negotiate his or her own salary independently and entirely within his or her own discretion.

MORRISON CHILD and FAMILY SERVICES

www.morrisonkids.org

Program Evaluation Analyst (ft) - Position responsible for data collection, management, analysis and reporting for large outpatient program. BSW plus 2 yrs exp. dealing with databases, multivariate analysis, program evaluation designs, theory and procedures required. MSW may substitute for experience. Clinical experience and/or knowledge of early childhood mental health literature preferred. Proficiency with Microsoft Access preferred. Send cover letter and resume to Linda Magnuson c/o Morrison Child & Family Services, 11456 NE Knott, Portland, OR 97220. Fax: 503-736-9759.

BILINGUAL Early Childhood Mental Health consultant (20 hrs/wk) - MSW - to work in collaborative project serving Head Start children and their families. Spanish language skills required and bilingual experience highly desirable. MSW, early childhood exp. required. Send resume to K. Falkenstern c/o Morrison Child and Family Services, 4790 N. Lombard, Portland, OR 97203.

Child Development Therapist (full-time) - Position at a day treatment program for young children. Work setting is in a milieu environment and the position requires an understanding of early childhood development and the impact of abuse and neglect on young children. Position is responsible for a caseload of 4 clients and includes duties such as treatment planning and attending treatment meetings. Bachelors degree in a behavioral sciences field or QMHA status is required. Consideration given to experience in day treatment/therapeutic nursery settings. Salary: \$23,660 plus benefits. Send resume to J. Blem, Morrison Child and Family Services, 11456 NE Knott, Portland Oregon 97220. Fax: 503-256-9601.

Early Childhood Mental Health Clinician (32-40 hrs/wk) - Master's level early childhood clinician to deliver treatment services to young children (birth to age 5) and their families. Services are delivered in homes, care/education sites, and office. MA in human services, early childhood experience required. Must have own transportation. Send cover letter/resume to K. Falkenstern, c/o Morrison Child and Family Services, 4790 N. Lombard, Portland, OR 97203. Fax: 503-736-9759.

Early Childhood Mental Health consultant (full-time) - Master's level position to work in a collaborative project serving Head Start children and their families. MA in human services, early childhood experience required. Must have own transportation. Competitive salary and benefits. Send resume to K. Falkenstern c/o Morrison Child and Family Services, 4790 N. Lombard, Portland, OR 97203. Fax: 503-736-9759.

Early Childhood Mental Health Therapist/Co-Supervisor (ft) - responsible for providing administrative and clinical supervision for outpatient clinic. Also provides outpatient counseling services to emotionally disturbed children (age's birth to 5 years) and their families. MSW plus 4 years direct exp. in a mental health setting providing intake assessment and therapy to children, adolescents and families; 2 years clinical and administrative supervisory experience; and licensure. Send cover letter/resume to Assistant Director of Operations c/o Morrison Child and Family Outpatient Services, 3355 SE Powell Blvd. Portland, OR 97202. Fax: 503-736-9759.

Mental Health Therapist (ft) - provide mental health services to emotionally disturbed children and their families. Duties include overall responsibilities for treatment planning and implementation and record keeping. MSW and 2 years direct exp. in mental health setting providing therapy to children, adolescents, families and adults required. Licensure preferred. Send cover letter/resume to: Michele J. c/o Morrison Child and Family Services, 2010 SE 182nd Ave., Portland, OR 97233. Fax: 503-736-9759.

Relief Child Care Workers (hours vary) - Morrison's Edgefield Children's Services, providing residential and day treatment services for emotionally and behaviorally disturbed children ages 6-12, is currently recruiting Relief Child Care Workers. Prefer applicants with education, training and/or experience working with children in the mental health field. Positions may lead into full-time employment. Apply at or send resume to Sean F. c/o Edgefield Children's Services, 2408 SW Halsey, Troutdale, OR 97060. Fax: 503-666-3066.

Treatment Coordinator-Licensed Practitioner (ft) - MSW - Morrison's Edgefield Children's Services, provides residential and day treatment services for emotionally and behaviorally disturbed children ages 6-12, is currently recruiting for a temporary, swing shift position. Potential of becoming a regular position. Responsibilities include tracking and reporting on clients' treatment progress, basic care taking, child management, relationship and counseling. Oversees and monitors all critical interventions. Clinical advisor to Direct Care Staff. Apply at or send cover letter and resume to Kim W. c/o Edgefield Children's Services, 2408 SW Halsey, Troutdale, OR 97060. Fax: 503-666-3066.

Program Coordinator - overall responsibility for day- to-day administration and implementation of services - including support groups and education programs. Will work closely with Parkinson's patients, volunteers, and others involved in the diagnosis, treatment, and care of Parkinson's. Requires BA (MSW preferred). Send resumes to: Holly Chaimov, Parkinson's Resources of Oregon, 2145 NW Overton, Portland, OR. 97210. 503/413-7717 www.parkinsonsresources.org

Oregon Chapter has just scheduled the following 2 repeat conferences in Portland:

"LCSW Exam Prep Workshop" on Nov. 5th, 8:30-4:30, room MOB East, Emanuel Hospital and **"Collaborative Supervision"** on December 2, 8:30-4:30, room 1077, Emanuel Hospital. Call chapter at 503-452-8420 for registration information.

NASW ACTION ALERT NETWORK

A tool for keeping social workers informed and involved with legislative action in Oregon...

Name: _____

Address: _____

Ph: Day: _____ Eve: _____

Email: _____

Mail to: NASW, 7688 SW Capitol Highway
 Portland, Oregon 97219

Fax: 503-452-8506

email: sm@nasworegon.com

INDIVIDUAL AND GROUP CLINICAL SUPERVISION FOR LCSW LICENSURE

MARY MIYAKAWA, LCSW

Over 20 years clinical experience treating families and children. 2005 PSU Post Graduate Certificate in Therapy With Adoptive Families. Experienced Clinical Supervisor.

SPECIALIZING IN ADOPTION, DIVORCE, AND STEP FAMILY ISSUES FOR PARENTS AND CHILDREN; POST TRAUMA STRESS DISORDER; EARLY CHILDHOOD DEVELOPMENT; ATTACHMENT SUPPORT; FILIAL PLAY THERAPY; PLAY THERAPY.

Contact: 503 680-8064 marymiy@earthlink.net

Men's Therapy Group

for adult survivors of sexual abuse.

Current openings. Group continuous since 1987. Portland metro area. Also individual, couples and consultation and training on male sexual abuse issues. Contact Donald L. Mann, LCSW, 503-228-1939, or email dmann@spiritone.com.

NASWJOBLink

THE SOCIAL WORK CAREER CENTER

Make the most of your job search

Find the job you're looking for on JobLink, NASW's online social work employment network.

Take control of your job search and career today!

- Personalize your job search and find the right job for you.
- Get an extra edge over the competition.
- Join NASW to post your résumés and attract top social work employers.
- Quickly apply for your favorite jobs online with just one click.
- Set up job search agents and have new listings emailed directly to you.

Go online today at www.socialworkers.org to take advantage of the new NASW JobLink Career Center.



750 First Street NE, Suite 700
 Washington, DC 20002-4241
www.socialworkers.org
 888-491-8833

CONTINUING EDUCATION OFFERINGS

Items above the dotted line have been approved for CE by NASW's Continuing Education Committee; items below the line have been submitted for approval.

Sept. 9, 8-4, "23rd Annual Conference on Aging...Celebrate Life" sponsored by Umpqua Community College, held in Roseburg. Call 541-440-4679, \$10, 5 hrs.

Sept 9, 7:30-9:30 pm, "What Are the Images From the Unconscious of Dementia/Alzheimer's Patients? Are They Capable of a Spiritual Life & Give Meaning to Their Suffering" and Sept. 10, 9-11:30 am, "How to Touch the Person Suffering With Dementia/Alzheimer's Disease" sponsored by Eugene Friends of Jung, held in Eugene. Call 541-484-1456, \$5-25, 2 and 2.5 hrs.

Sept. 14, 9-4, "New Motivational Strategies That Work – Helping Patients and Clients Make Healthy Choices and New Dental Interventions to Improve Birth Outcomes in Pregnant Women and Reduce Tooth Decay in their Children" sponsored by Klamath County Dept. of Public Health, et al, held in Klamath Falls. Call 541-882-8846, ext. 3417, \$35, 5.5 hrs.

Sept. 16, 9-4:30, "Moving Beyond Talk Into Experience" sponsored by Kelly Osmont, LCSW, held in Portland. Call 503-221-4243, \$75, 6 hrs.

Sept. 16, 7:30-9:30 pm, "Urgent Message From Mother" & Sept. 17, 9:30-4, "Grail, Goddesses, Crones and Circles" sponsored by Oregon Friends of CG Jung, held in Portland. Call 503-223-3080, free to \$95, 2 and 5.25 hrs.

Sept. 17, 9:30-4, "Myth and Magic: Archetypes in Sandtray Journeying" sponsored by Barbara S. Stott, LPC, M.Ed., NCC, DCC, held in Springfield. Call 541-747-6900, \$125, 5.5 hrs.

Sept. 26, 9-4:15 & 27, 8:30-12:15, "Subject to Change: Tools and Practices to Transform Children's Mental Health Services" sponsored by CHARPP and SOASTC. Call 888-523-5225, \$225, 5.5 and 3.5 hrs.

Sept 29 thru Oct. 2, (times vary) "Dream Circle Tapestry at Land's End" sponsored by Jennifer Gordon, Ph.D. and Tess Castleman, LPC, held in Florence. Call 541-338-8033, \$500, 23.25 hrs.

Sept. 30, 9-4, "Sacred Therapy for Mental Health Professionals" sponsored by Jewish Family & Child Service, held in Portland. Call 503-636-0111, \$180, 5.75 hrs.

NASW, Oregon Chapter's Continuing Education application fees are:		
	regular applications	non-profit and not charging
1-16 hours of CE credit	\$105	\$55
17-25 hours	150	75
26-55 hours	200	100
56-99 hours	250	125
100-150 hours	300	150
151-200 hours	350	175
Repeat of conference (within 1 year)	40	20

Applications are to be submitted 4 weeks (20 business days) prior to the date of the conference. Completed applications received 2 weeks (10 business days or less) before the date of the conference will be assessed a late fee of \$25. Please call the chapter office at 503-452-8420 if you have questions.

Sept. 30 – Oct. 1, 9-4:30, "Women Healing" sponsored by Hazelden Foundation, held in Clackamas. Call 888-257-7800 ext. 4429, \$150, 11.25 hrs.

October 7, 8-5, (Eugene), "Psychotherapeutic Drugs Update 2005" (repeats Oct. 13, in Portland, Oct. 21, in Salem, Oct. 27, in Portland, Nov. 4 in Beaverton) and

Oct. 14 8-5, (Portland), "Child & Adolescent Psychopharmacology and Substance Abuse and its Treatment" (repeats Oct. 28 in Portland) sponsored by Northwest Psychopharmacology Seminars and Robert M. Julien, M.D., Ph.D. Call 503-703-3744, \$95/day or \$180 both days. Each day approved 7 hrs.

Oct. 14, 8-2:30, "Pain Management for Health Professionals" sponsored by IHP, PCC, held in Portland. Call 503-731-6633, \$109, 6 hrs.

Oct. 14, 7:30-9:30 pm and Oct. 15, 9:30-4, "Separation, Sorrow and Individuation" sponsored by Oregon Friends of CG Jung, held in Portland. Call 503-223-3080, \$10-85, 2 and 5.25 hrs.

Oct 20, 8:30-4, (Portland), "Unique Play Therapy" (repeats Oct. 21 in Seattle), sponsored by HEALTH Education Network, LLC (dba) HEALTHED. Call 800-839-4584, \$139, 6 hrs.

Oct. 21, 8-5, "Child Neglect and Brain Trauma: Practical Approaches to Working With Children and Youth" Sponsored by Jackson County Courts and Community: Caring for Children and Families, held in Medford. Call 541-774-7800 (Becky Longie) \$30, 6 hrs.

Oct. 21, 8:30-12:45, "Mindfulness Practice for Health Care Providers & Their Patients" sponsored by IHP, PCC, held in Portland. Call 503-731-6633, \$114, 4 hrs.

Oct. 21, 8:45-4:30, "Prevention and Intervention Strategies With the Violent Client" sponsored by Oregon Chapter, NASW, held in Portland. Call 503-452-8420, \$15-135, 6 hrs.

Oct. 21, 8:30-5, "Narrative & Collaborative Approaches" sponsored by Oregon Chapter, NASW, held in Pendleton. Call 503-452-8420, \$15-135, 6 hrs.

Oct. 26, 2:30-4, "Medication Assistance Dilemmas – The Hidden Answers You've Been Looking For" sponsored by Legacy Health System Dept. of Social Services & Utilization Review" held in Portland. Call 503-413-4386, no charge, 1.5 hrs.

Oct. 27, 8:30-4, (Portland) "The Meaning and Assessment of Crying Based on Attachment Theory & Research" (repeats Oct. 28 in Seattle) sponsored by HEALTH Education Network, LLC (dba) HEALTHED. Call 800-839-4584, \$139, 6 hrs.

Oct. 27, 8:30-4:30, "Tax Issues for Tax Exempt Organizations" sponsored by Lorman Business Center, Inc., dba Lorman Education Services, held in Portland. Call 715-833-3940, \$299, 6.5 hrs.

Nov. 4, 8:30-4:30, "Negotiation Skills for Health Care Professionals: Bent Tires & Stone Bruises" sponsored by IHP, PCC, held in Portland. Call 503-731-6633, \$129, 7 hrs.

Nov. 4, 9:15-4, & 5, 9:15-4:45, "Conflict as Catalyst for Change" sponsored by Oregon Mediation Association, held in Beaverton. Call 503-872-9775, \$225, 11.75 hrs.

Nov. 5, 8:30-1, "Establishing/Maintaining Healthy Boundaries" sponsored by Oregon Chapter, NASW, held in Portland. Call 503-452-8420, \$10-80, 3.5 hrs.

Nov. 5, 8:30-4:40, "LCSW Exam Preparation Workshop" held in Portland. Call 503-452-8420, \$165 and \$195, 6 hrs.

Nov. 9, 9-4:30, "Understanding Individuals With Asperger Syndrome or High-Functioning Autism" sponsored by Lorman Business Center, Inc. dba Lorman Education Services, held in Portland. Call 715-833-3940, \$279, 6 hrs.

Nov. 10, 9-4:30, "Medical Records Law" sponsored by Lorman Business Center, Inc. dba Lorman Education Services, held in Portland. Call 715-833-3940, \$319, 6 hrs.

Nov. 12, 2-5, "Mind/Body Medicine for Health Professionals" sponsored by Samaritan Health Services – HeartSpring Wellness Center, held in Corvallis. Call 541-768-6412, \$95-125, 3 hrs.

Nov. 17, 9-4:30, "Section 504 Vs. The IDEA" sponsored by Lorman Business Center, Inc. dba Lorman Education Services, held in Salem. Call 715-833-3940, \$289, 6 hrs.

Nov. 18, 8:30-5, "The Role and Uses of Intuition in Psychotherapy" sponsored by Oregon Chapter, NASW, held in Portland. Call 503-452-8420, \$15-135, 6 hrs.

Dec. 2, 8:30-4:30, "Collaborative Supervision" sponsored by Oregon Chapter, NASW, held in Portland. Call 503-452-8420, \$15-135, 6 hrs.

.....
Submitted for approval

Sept. 16, 8-4:30, "Hot Topics in Hillsboro" sponsored by Juvenile Firesetter Intervention Network of Washington County held in Hillsboro. Call 503-504-5142, \$100.

Sept. 16, 2:30-3:30, "Spiritual Care for Behavioral Health Patients" sponsored by Providence St. Vincent Medical Center Pastoral Services Dept, held in Portland. Call 503-216-2261, free.

Sept. 22-23, 8-5, "Harnessing Hope & Reducing Relapse: Engaging Clients in Cognitive Therapy for Depression" sponsored by Multnomah County Health Dept, held in Portland. Call 503-988-3674 ext. 24976. \$199.

Sept. 30, 9-4:30, "Child & Teen Sexual Abuse: Developing Collaboration Between Therapy and The System" sponsored by MHREN, held in Medford. Call 541-773-7503, \$80-100.

Oct. 7, 8:30-4, "ADHD and The Edison Gene" sponsored by John McManus, Ph.D., held in Portland. Call 503-636-0111, \$145.

Nov. 11, 7:30-9:30 pm, & Nov. 12, 9:30-4:30 "Jung, Cosmology and the Transformation of the Modern Self" held in Portland, Call 503-223-3080, free to \$85.

Dec. 2-3, 9-5, "Crucible Approach: Integrating Marital and Sex Therapy" sponsored by MHREN, held in Medford. Call 541-482-3314, \$150-210.

Dec. 9, 7:30-9:30 & Dec. 10, 9:30-4, "Finding Meaning in the Second Half of Life" sponsored by Oregon Friends of CG Jung, held in Portland. Call 503-223-3080, free to \$85

"We are very impressed with the power and simplicity of TIR in helping trauma sufferers work through their frightening experiences and find great relief."

Charles R. Figley, Ph.D., Academy of Traumatology

**Moving Beyond Trauma:
Recovering from Post Traumatic Stress**

8:30 am – 4:30 pm

NOVEMBER 2, 3, 4 & 5 2005

10700 SW Beaverton-Hillsdale Hwy Beaverton, OR

Jim Hussey, LPC, NCC
Certified Traumatologist

24 CEUs for \$ 395
Graduate students - \$325

Traumatic Incident Reduction is a tool that works, and it works with over 90% of the clients who have identified a significant emotional event that was traumatic. **It can even help identify and heal unremembered traumatic events!**

Discover how this simple, practical and non-invasive technique can guide your clients from symptomatic to symptom free, **often in one session!**

Social workers: This program approved by NASW for 24 continuing education contact hours. (provider #886415259)

This workshop completes T-1004 for Certified Traumatologist

If you are unsatisfied you can request a full refund of the training fee.

Register soon – space is limited 503 740-7074

e-mail: jimhussey@traumarelief.org

Register by October 10 and receive a 15% discount

DO YOU BELIEVE IN MAGIC?

Come and learn about a very different kind of family healing, one that works with the "knowing field," that mystical energy connection that creates its own intelligence whenever a group is formed. This work is called Family Constellations and it applies to any system. Constellations change family dynamics by providing clients with new perspectives that turn criticism into acceptance. If you find yourself at times frustrated with talk therapy, Family Constellations is a viable alternative that involves second order change (outside-the-box perspective). Bert Hellinger (www.berthellinger.com) originated the process in Europe, where therapists in over 30 countries now benefit from it. You are invited to attend the first U.S. Conference on Systemic/Family Constellation Work of Bert Hellinger. October 6-10 Portland, Oregon. CU's are available.

**To register visit the website at
www.2005USConference.com**

**For a free demonstration of the work contact
Jane Peterson at
info@human-systems-institute.com**

**ERICKSONIAN APPROACHES TO
BRIEF HYPNOTIC
PSYCHOTHERAPY**

**Multi-level Training
available through**

**The Milton H. Erickson
Institute of Portland**

**Contact Bart Walsh, LCSW
(503) 293-1811**



**Share a Great
Experience!**

**16,000+ satisfied NASW members are
receiving 25% Partial Premium Refund
Checks from the NASW Insurance Trust!**

In November, the NASW Insurance Trust will share the good 2003 Group Life & Disability Insurance program experience by sending a 25% partial premium refund check to eligible 2003 participants.*

Participate in the Group Life & Disability Insurance Program and you'll enjoy the peace of mind that comes from knowing that you and your dependents are protected with affordable, trusted, top-rated insurance coverage.

Not a NASW member? Call (800) 742-4089.

Underwritten by: Principal Life Insurance Company
Des Moines, IA 50309-0002



NASW Insurance Trust
(800) 336-8387 / (202) 336-8387
www.NASWInsuranceTrust.org
insurancet@naswdc.org

* Members eligible for the 2003 Partial Premium Refund must have paid at least \$50 in premiums during 2003, and must currently remain insured in the program. Premium refunds are not guaranteed.

©2004 National Association of Social Workers. All Rights Reserved.

OREGON CHAPTER NASW NEWSLETTER ADVERTISING POLICY

PREPAID ADS ONLY. Please submit typed or printed copy to THE NEXUS by the following deadline dates. THE NEXUS is published 4 times a year.

ISSUE:	Winter	Spring	Summer	Fall
Deadline:	Nov. 1	Feb. 1	May 1	Aug. 1

RATES: (WIDTH x HEIGHT)	NASW MEMBER		NON-MEMBER	
	Camera Ready/Not	Camera Ready/Not	Camera Ready/Not	Camera Ready/Not
1/8 page (3.625" x 2.375")	\$ 30	\$ 40	\$ 45	\$ 55
1/4 page (3.625" x 4.9")	\$ 55	\$ 70	\$ 75	\$ 95
1/2 page (7.5" x 4.9" or 1 col. vert.)	\$110	\$125	\$155	\$170
Full page (7.5" x 9.938")	\$200	\$225	\$250	\$275
One Column inch		\$ 20		\$ 27
Classified (30 words or less)		\$ 15		\$ 23

NO CHARGE FOR JOB OPENING ADS

Oregon Chapter, NASW retains the right to edit and to exclude from printing any material that it considers not to be in the best interest of the Chapter purpose and objectives.

Send check to: Oregon Chapter, NASW • (503) 452-8420
7688 SW Capitol Hwy • Portland, OR 97219 • Fax (503) 452-8506

Rev 7-01

ADS

Clinical Supervision toward LCSW or LPC licensure – 18 years experience. Areas of expertise: addictions, anxiety, depression, medication management, grief/loss, family systems, women's issues. Collaborative, strengths-based approach. Affordable. Kayla Leopold, LCSW, 503-860-0656.

Psychotherapy Groups. Offering 2 on-going mixed gender groups. Modern psychoanalytic orientation. Downtown location. For information/referral call Linda Eisenberg, Psychologist Associate, Certified Psychoanalyst. 503-279-4648

Carol V. Swingen, LCSW announces a new convenient location. My new office is in West Slope, which is between Portland and Beaverton. The address is 8885 SW Canyon Rd., #135, Portland, phone 503-292-7511. I continue to serve individuals, couples and families.

Classified:

Attractive downtown Portland office available Mon., Tues., Fri. New paint, new waiting room furniture. Close to MAX and light rail. \$125/day or \$350/month for all 3 days. Call 503-227-5692.

Pleasant therapy office in convenient southeast location available part time. Ample parking, near max line and Tri met busses. Call Carol Wenzel, 503-257-6822.

Office Space for sublet in John's Landing area. Call 503-231-7854 ext. 40 for further information.

Beautiful, furnished office in old restored NW Portland house available for sublet. Hourly, daily or monthly times available. Waiting room, part-time reception, private deck. Call 503-725-3505.

Lovely, small office with lots of windows in excellent NW location available. Suite of 3 with shared wait room, kitchen, fax/copies, etc. Free off-street parking for clients; handicap access. Call Virginia: 503-274-1945.

Beautiful Downtown Portland Office available various days. New furniture/paint/carpet, natural light, share waiting room. Close to all public transportation. Easy parking. 1130 SW Morrison, \$125/day. Call 503-227-8774.

Office for rent in building with lots of charm. Near Lloyd Center. All mental health professionals. Please call Marsha Kohen, LCSW, at 503-287-7006.

Office Space in Salem, full or part-time. Handicapped accessible, waiting room, play therapy room, secured fax, copy machine. Contact Jim Alderson, LCSW, 1500 Liberty St. SE, Suite 230, 503-581-0808.

Cozy 2 bedroom beach house in Otter Rock. Fully equipped, sleeps six. Quiet, private. Partial ocean view. Walk to 2 great beaches. No smoking, \$80/night. 503-650-2310.

Delightful ASHLAND COTTAGE FOR 2, \$75 NIGHTLY. Contact Adrienne at 541-482-8185 or afanjet@jeffnet.org.

NOTICES

PLEASE DIRECT INQUIRIES ABOUT LICENSING OF SOCIAL WORKERS IN OREGON TO:

State Board of Clinical Social Workers
3218 Pringle Rd., SE, Ste. 240
Salem, Oregon 97302-6310

Phone: (503) 378-5735

Fax: (503) 373-1427

For current information on disciplinary actions taken by the Board, please contact the Board office. A Disciplinary Report is available that provides historical information on all disciplinary actions taken by the Board. This report is updated annually and is available to the public. Web page: www.oregon.gov/bcsw/index/shtml

State Licensure Board Offers Toll-Free Number

The State Board of Clinical Social Workers (the licensing agency for the LCSW credential) recently announced that it has established a toll-free Consumer Protection Hotline. The new toll-free number is 1-866-355-7050. The Board intends for this number to be used by any licensees or members of the public who need to contact the Board.

HAS YOUR ADDRESS CHANGED???

We are requesting members to contact the National office online for updates on personal data information.

ONLINE MEMBER UPDATING:

1. Go to www.socialworkers.org
2. Click on "member's login"
3. Click on "update your member profile"
4. Click on "edit" to update.
5. Make changes and click "submit"

PLEASE Notify the State Board of Clinical Social Workers and/or the National Association of Social Workers when you move.

When material is returned due to an old address, we have to pay extra postage from the post office, in addition to the original postage sent to an incorrect address.

We are non profit organizations, so this waste of money and paper hurts. Please, write, call or email us with your updated information. Thank you.

NASW E-MAIL ADDRESSES ARE:

nasw@nasworegon.org for general mail, information, or questions
SM@nasworegon.org for mail to Scott Manchester, Executive Dir.
JK@nasworegon.org for mail to Janet Kusyk, Program Coordinator
KB@nasworegon.org for mail relating to general inquiries
<http://www.NASWOREGON.ORG> web site

STATE BOARD OF CLINICAL SOCIAL WORKERS NOTICE OF DISCIPLINARY ACTION:

2005 DISCIPLINARY ACTIONS

Robert A. F. White, MSW (LCSW 1098) Manzanita, OR. Stipulation for Voluntary Permanent Surrender of License in Lieu of Revocation and Final Order dated July 20, 2005. Violation of ORS 675.510(2) related to submitting false claims for health care payment for mental health services he did not render. White paid the full restitution of \$169,620.59, and permanently surrendered his Clinical Social Worker License.

Kathleen R. Boeve', MSW (LCSW 1450), McMinnville, OR. Final Stipulated Order, Letter of Reprimand for Additional Continuing Education and Assessment of Costs – dated April 27, 2005. Violation of OAR 877-030-0070(3) related to dual relationships with clients. Licensee fully cooperated with the Board in connection with its disciplinary process.

Kathleen L. Prieto, MSW (LCSW 2391), Portland, OR. Final Order by Default (Probation and Assessment of Costs) – dated April 15, 2005. Violation of OAR 877-030-0070(1) related to dual relationship. One year probation that places certain conditions or limits on social work practice.

Donald L. Mann, MSW (LCSW 943), Portland, OR. Stipulated Order of Reprimand – dated February 8, 2005. Violation of OAR 877-030-0070(13b) related to failure to release records to custodial parent. Licensee fully cooperated with the Board in connection with its disciplinary process.

Stanley J. Marcus, MSW (LCSW #3349), Portland, OR. Final Order by Default (Letter of Reprimand and Assessment of Costs) – dated January 20, 2005. Violation of OAR 877-030-0070(14) related to disclosure of confidential client information (one instance) and OAR 877-030-0070(17) related to soliciting clients from agency for private practice (one instance). Licensee fully cooperated with the Board in connection with its disciplinary process.

2004 DISCIPLINARY ACTIONS

M. Diane Wade, MSW (LCSW #L2778) Salem, OR. On November 6, 2004 the State Board of Clinical Social Workers issued a Final Order accepting the Stipulation for Voluntary Surrender of Clinical Social Worker License in Lieu of Revocation which Ms. Wade had submitted to the Board. Ms. Wade's License as a Clinical Social Worker in Oregon has been surrendered for having engaged in conduct that violated OAR 877-030-0070(4) related to sexual conduct with a former client.

Polly A. Morrow, MSW (CSWA #A1451), Lake Oswego, OR. On June 16, 2004, the State Board of Clinical Social Workers issued a Final Order accepting the Stipulation for Voluntary Surrender of Clinical Social Work Associate Certificate in Lieu of Revocation which Ms. Morrow had submitted to the Board. Ms. Morrow's certificate as a Clinical Social Worker Associate in Oregon has been surrendered for having engaged in conduct that violated OAR 877-030-0040(2) related to dishonesty, fraud, deceit, or misrepresentation and OAR 877-030-0070(4) regarding sexual conduct and related behavior with a former client.

Robert M. Clark, MSW (LCSW 751), Pendleton, OR. On February 13, 2004, the State Board of Clinical Social Workers issued a Final Order Imposing Discipline (Probation). Mr. Clark has been placed on one year probation for having engaged in unprofessional conduct that violated OAR 877-030-0070(14) related to disclosure of confidential client information in the practice of clinical social work. During the probationary year, Mr. Clark will receive monthly supervision from a Board-approved LCSW supervisor. Licensee will also attend 15 hours of continuing education on client confidentiality. The Board acknowledges that Mr. Clark fully cooperated with the Board in connection with the disciplinary process.

2003 DISCIPLINARY ACTIONS

Homer Samuel Adams, MSW, (LCSW #1724), Portland, OR. On September 9, 2003 Final Order Imposing Discipline (License Revocation). Mr. Adams' license to practice as a Clinical Social Worker in Oregon has been revoked for having engaged in unprofessional conduct in the practice of clinical social work and conduct that violated OAR 877-030-0040(2) related to dishonesty, fraud, deceit, or misrepresentation and OAR 877-030-0070(4) regarding sexual acts and related behavior with a client. The Board also concluded that the continued practice as a clinical social worker by the Licensee presents a serious danger to the public health or safety and confirmed the emergency suspension orders previously issued.

More Information? Make request in writing to: State Board of Clinical Social Workers, 3218 Pringle Rd., Ste. 240, Salem, OR 97302-6310.

FIRST ANNUAL INTERNATIONAL SYMPOSIUM

A WHOLE NEW WAY OF LOOKING AT HUMAN RELATIONSHIPS.



MINDSIGHT

THE NEUROSCIENCE MOVEMENT

REWIRING OUR BRAINS THROUGH RELATIONSHIP

PORTLAND WATERFRONT MARRIOTT HOTEL

OCT 21-23 FRI - SAT - SUN

(503) 227-2150

3 FULL DAYS ~ \$450

\$100 NASW DISCOUNT ~ \$350 (USE GROUP CODE NASW)

18-21 CEU'S



DAN SIEGEL, MD

Interpersonal Neurobiology
Pioneer



JOHN O'DONOHUE, PHD

Internationally Acclaimed
Poet & Philosopher

FOR MORE INFORMATION GO TO OUR WEBSITE:

WWW.VANGUARDINACTION.ORG

Carl Marci, MD



Peter Whybrow, MD



Daniel Amen, MD



Helen Reiss, MD

EXPLORING THE SCIENCE OF POSITIVE PSYCHOLOGY



HOSTED BY VANGUARD IN ACTION JANE FORTUNE, DIRECTOR



DIALOGUES IN GESTALT THERAPY

2005-06 TRAINING PROGRAMS PORTLAND GESTALT TRAINING INSTITUTE

**Carol Swanson, LCSW, BCD ■ WITH Jeffrey Sher, PsyD.
Mark Fairfield,* LCSW, BCD AND Lynne Jacobs,* PHD**

Experience an in-depth exploration of the Gestalt therapy relational approach. This program integrates the personal experiential dimension with clinical application and theory, along with developing your own therapeutic style. We will focus on themes such as the therapeutic relationship, working at the contact boundary, accentuating and expanding awareness, and use of experiments. Extensive opportunity is available for discussion and supervision. Four weekend trainings.

Four weekends:

1. September 30, October 1,2
2. December 2,3,4
3. February 3,4,5
4. April 7,8,9

Reserve by phone or email:

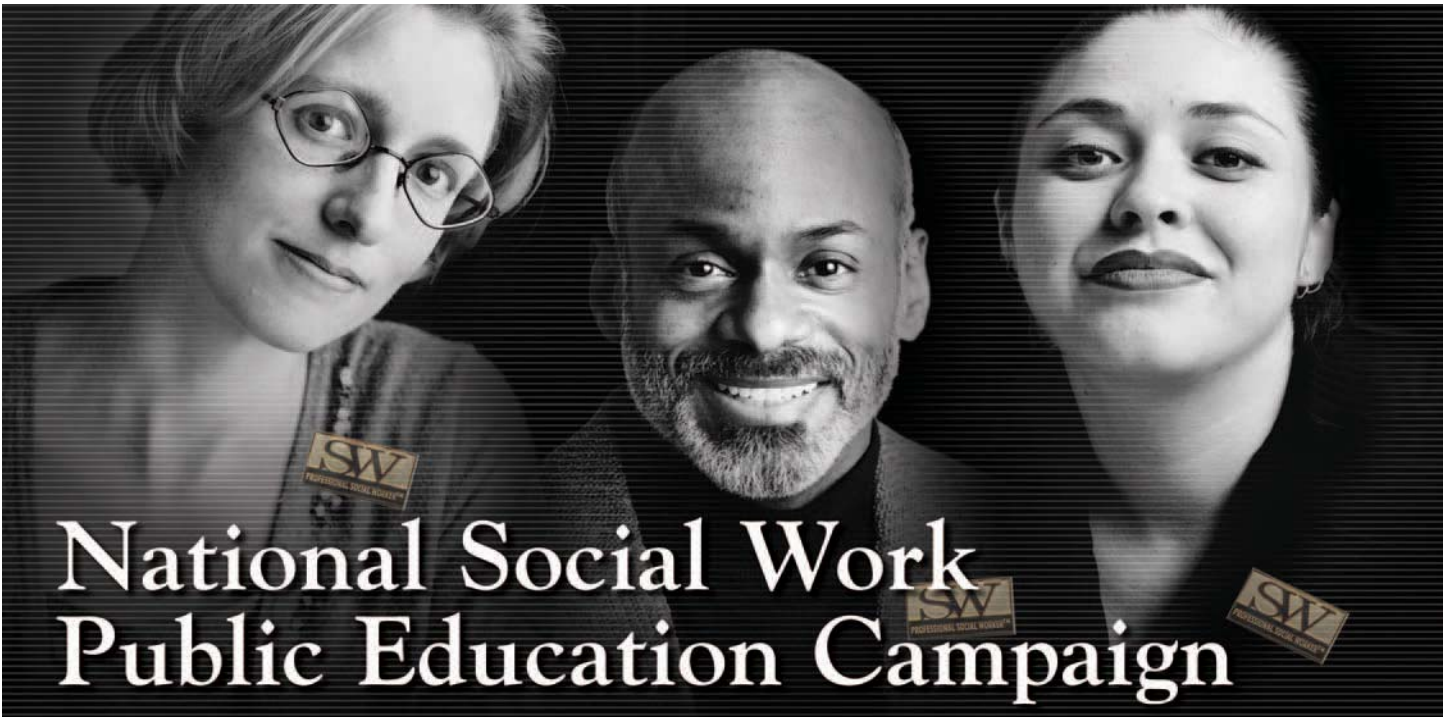
503-224-3833 (Carol)
NdakotaSue@yahoo.com

Monthly Case Consultation

(Advanced group) contact:
503-228-1242 (Jeffrey)
JeffreyDSher@hotmail.com

www.pgti.org

* Guest faculty from Pacific Gestalt Institute Los Angeles, California



National Social Work Public Education Campaign

If we don't tell our story, who will?

Every day, millions of people are helped by a social worker. You do make a difference. And it's time to let the world know. It's time to tell your story.

**Help make this historic
campaign a reality.**



*Donors of \$50 or more will receive a Professional Social Worker pin. Donors of \$1,000 or more will receive a 14kt. gold limited edition Professional Social Worker pin. This pin recognizes social workers as educated, experienced and ethical. Wear it to show your commitment to the social work profession.

Yes, I am committed to the Public Education Campaign.

**Donate \$50 today in celebration of NASW's 50th Anniversary.
Help make this campaign a reality.**

\$50

Enclosed is my tax-deductible contribution of:

\$50 (suggested donation) \$100 \$250 \$1,000 (limited edition 14kt. gold pin for \$1,000 donation or more)

\$_____ All contributions are appreciated.

Name: _____ E-Mail: _____

Address: _____
(your pin will be mailed to this address)

City: _____ State: _____ Zip Code: _____

Please make checks payable to the **NASW Foundation** (note Public Education Campaign in the memo line of your check)

Please charge my: Visa/MasterCard American Express

Account Number _____

Exp. Date _____ Signature _____

**For additional information, or to contribute online,
visit www.naswfoundation.org or call 800.742.4089.**



750 First Street NE, Suite 700
Washington, DC 20002-4241





A V A M E R E

It all starts with understanding your needs.

(503) 607-5000

If you are searching for a Skilled Nursing Facility, Assisted Living or Home Care and you are not sure where to turn, call the **Avamere Central Information Line** to talk with one of our friendly customer service representatives. We are there when you need us.

(503) 607-5000



Avamere Skilled Nursing Facilities

24-hour Nursing

Respite Care

Long and Short Term Care

Physical Therapy, Occupational Therapy and Speech Pathology

Individualized and Group Activities

Caring for the “whole person” comes naturally at Avamere where our programs, nursing care and therapies place a strong emphasis on the mental and emotional well being of each patient. Part of our whole-person care approach is the involvement of the patient’s family in helping to develop key elements of the care plan based on the life history and personal interests of the patient.

King City Rehab & Living Center	(503) 620-5141
Beaverton Rehab & Specialty Care	(503) 646-7164
Hillsboro Rehab & Specialty Care	(503) 648-8588
Mountain View Rehab & Living Center	(503) 656-0367
Clackamas Rehab & Specialty Care	(503) 656-0393
Gresham Rehab & Specialty Care	(503) 666-5600

For additional information visit our website.

www.avamere.com

or call Central Admissions at (503) 607-5000

Mental Health Resource and Education Network
presents the

Crucible Approach®:

Integrating Marital and Sex Therapy

with
David Schnarch, Ph.D.

December 2-3, 2005
Medford, Oregon

The Two-Day Therapist Workshop provides an overview of the Crucible Approach, a paradigm shift from dysfunction-based approaches, which emphasizes clients' strengths, resilience and capacity for personal growth. Besides explaining sexual problems, it shows you how couples can use sex to create that growth and become more capable of loving.

The Crucible Approach focuses on developing self-regulation and emotional connection by going through anxiety-provoking relationship struggles in ways that create maturity and enhance intimacy and eroticism.

Besides exciting lecture presentations brimming with fresh ideas and novel viewpoints, a live therapy demonstration illustrates practical clinical interventions.



David Schnarch, Ph.D. is a licensed clinical psychologist and certified as a sex therapist by the American Association of Sex Educators, Counselors and Therapists. He is a clinical member of the American Association for Marriage and Family Therapy, and serves on the editorial board of the *Journal of Marriage and Family Therapy*.

In 1991, he wrote *Constructing the Sexual Crucible: An Integration of Marital and Sexual Therapy*, now used as a primary textbook in graduate training programs. His books on couples, *Passionate Marriage: Sex, Love and Intimacy in Emotionally Committed Relationships* (1997) and *Resurrecting Sex: Resolving Sexual Problems and Rejuvenating Your Relationships* (2002) have become international bestsellers.

Smullin Center at Rogue Valley Medical Center
2825 E. Barnett Rd, Medford, OR

MHREN Members: \$170; Non-members: \$210
\$20 discount if postmarked by November 11, 2005
CEUs applied for through NASW (included in price)
Full-time students half-price

Send check to:

MHREN, PO BOX 1082, Ashland, OR 97520

Information: Paul at 541-482-3314 or www.mhren.org

Free Public Lecture with Dr. David Schnarch
Thursday, December 1, 2005, 7:30-9:30pm

For Mental Health Professionals

Harnessing Hope & Reducing Relapse:

*Engaging Clients in
Cognitive Therapy for Depression*

Christine Padesky, Ph.D.

September 22-23, 2005

Oregon Convention Center
777 NE Martin Luther King Jr. Blvd
Portland, Oregon 97232
www.oregoncc.org

For information call Lori Bock
503-988-3674 ext. 24976 or
www.mchealth.org/ctconference



Conference sponsored by
Multnomah County
Health Department

Images in Sand: An Introduction to Jungian Sandplay Therapy

Saturday November 19th
9:00 am– 5:00 pm

Portland, OR

Presenter: Diane Hyde, LCSW, ACSW

*Ms. Hyde is a teaching member of the
Sandplay Therapists of America
and the*

*International Society of Sandplay Therapists;
she is in private practice in Portland.*

For more information and/or registration:
503.227.6080; dianehyde@qwest.net

PSYCHOPHARMACOLOGY SEMINARS

Psychotherapeutic Drugs Update 2005

October 7, 13, 21, 27 or November 4

Substance Abuse and its Treatment

October 14 or 28

For more information:

Website: www.drjulien.com

E-Mail: becky@drjulien.com

Phone: Becky Julien: 503-703-3744

Donna C. Henderson, L.C.S.W.

*Licensure supervision & case consultation
for individuals and groups.*

*Office convenient to Mid-Willamette Valley
& central coast social workers*

phone: 503-838-6144

e-mail: donnacate@earthlink.net

"Moving Beyond Talk into Experience"

A Workshop for Mental Health Professionals



Presenter Kelly Osmont, LCSW

- Utilize exercises which help clients embody new concepts
- Clarify and teach boundary concepts experientially
- Demonstrate to clients how powerfully unconscious information directs their lives
- Increase clients' awareness of internal process as experienced in their bodies
- Assist clients in releasing themselves from emotionally charged memories- connected to people, which affect their current lives
- Increase client's rate of progress toward healthy behavior changes
- Make counseling sessions more energized, exciting and effective

Friday Workshop

September 16, 2005

9 a.m. to 4:30 p.m.

Telephone: 503-221-4243

6 approved NASW CE credits - Limited enrollment

Sure-Fire Ways to Support Clients' Change Process

ADOPTION COUNSELING & EDUCATIONAL SERVICES

www.adoptioncounselingservices.com

Offices in:

Beaverton Portland(2) Gresham Hillsboro Wilsonville Lincoln City

503-522-0839

CERTIFIED ADOPTION THERAPISTS:

~ Gail Hardman Woung MSW ~ Mary Miyakawa LCSW ~ Hilde Price-Levine LCSW ~ Susan Ulbright LCSW ~

Free Monthly Adoptive Parent Support Group

Now Accepting Registration for Fall Groups

Consultation

Therapists

Families

Schools

Organizations

Groups for:

Children

Adolescents

Adult Adoptees

Women

Counseling/Coaching

Children 0-12

Adolescents

Adult Adoptee

Parents

Instruction

Adoptive Parenting Course

Staff Development Training

Continuing Education

Professional Supervision

MSW & LPC

Clinical Issues:

Reactive Attachment Disorder

Attachment Grief and Loss

Oppositional Behaviors

Identity Depression

Abuse: Sexual/Physical

Anger Rage Control

Adoption & Divorce

Anxiety Trauma

Sponsoring Quarterly Consultation with International Adoption Trainer & Author, Deborah Gray, MSW MPA

25% of clients are accepted on an extended sliding scale

Call for Presentations

SOCIAL WORKERS SHAPE A NEW REALITY: Building Strengths in the Face of Uncertainty

The Conference Committee of the Oregon Chapter, NASW invites you to submit a proposal for a presentation or poster session at the annual state conference "Social Workers Shape a New Reality: Building Strengths in the Face of Uncertainty" on **May 5, 2006** at the **Holiday Inn Downtown Lloyd Center in Portland**. The presentations/poster sessions must address topics that have a strong, broad-based appeal and are evidence based or best practices in the 4 chosen tracks: **Direct Clinical Practice** (health, mental health, specific treatment options, varied settings, etc.), **Addictions** (alcohol, tobacco, other drugs, sex, gambling, other), **Violence & Safety** (domestic violence, child abuse/neglect, elder abuse/neglect, bullying or school violence, PTSD, violence and safety needs in the workplace in general or for the clinician in private practice or public organization, other), and **Supervision or Administration** (supervising clinicians, program development, program policy, program evaluation, not direct clinical work with clients but still clinically focused.)

The format will be 75-minute or 105 minute workshops. We will consider longer workshops (e.g. 150 minutes) but presenters must provide justification regarding the need for a longer block of time. We are looking for presentations in the following practice areas.

Corrections	Risk Management	Alcohol, Tobacco, & other Drugs Treatment/Education
Aging, Retirement, End of Life Issues	School Social Work	Addictions other than ATOD (sex, gambling, etc.)
Health and Mental Health	Rural/Urban issues	Treatment/Education
Children and Families	Child Welfare & Reform	Poverty & Social Justice Issues
Organizational issues	Integrated Service Models	Oppression/Diversity/Gay and Lesbian issues
Private Practice issues	Program Development	Violence and Safety Issues
		Community Organization/Community Practice
		Supervision, Management and Administration
		Evidence Based Methodology-Evaluating Ones Practice

Submission Guidelines: Proposals should consist of **two copies** of:

1. An abstract of no more than 500 words typed and double spaced.
2. A no more than 75 word succinct description of your proposed workshop as you would like it to appear in the conference brochure. Please include any criteria relating to the prior skills and experience level of your target audience.
3. A cover page providing the title of the presentation and identification about the presenter(s). Include name, address, fax, E-mail and phone, organization affiliation, degrees, credentials and a 75 word succinct summary of each presenter's experience and expertise.
4. Audio Visual Equipment __ None Required __ AV Required Please order only the equipment that is crucial to your presentation. Flip charts and/or marker boards are easily provided. TV, VCR, overhead and slide projectors are available **if requested with this proposal**. We regret that we are unable to provide PowerPoint equipment.

Submission deadline: Submitted proposals must be postmarked by December 16, 2005. Send all proposals to NASW Annual Conference, 7688 SW Capitol Hwy, Portland, Oregon 97219.

Notification of Proposal Status: Letters on the status of proposals will be mailed to the presenters by February 10, 2006.

Welcome New Members

The Oregon Chapter wants to welcome the following new members who joined NASW since May 17, 2005. We thank you for your membership and look forward to getting to know you.

Suzanne Barnhart	Tori Fornaciari	Jennifer Sharff
Katherine Grant	Marsha Andrews	Kristy Hammer
Michele Limpens	Margaret Young	Kelly Rolf
Roland Wilson	Cheri Armstrong	Jarvis Allen
Jeanette Hansen	Andrew Forshee	Ann Thomas
Gail Long-McCauley	Dorothy Reichling	
Ardel Sheffield	Stephani Hayes	
Barbara Hedrick	Chelsea Barbour	

Individual Clinical Supervision Towards LCSW Licensure.

Ten years experience treating adults with a focus on outpatient and inpatient mental health, poverty/homelessness, axis I and axis II disorders, managed care and ethics. Eclectic orientation.

Affordable rates with evening hours near PCC-Sylvania. For more information contact Larry Betcher, LCSW, CADCI, 503-887-6379 or l.betcher@comcast.net.

CALENDAR OF EVENTS

September

- 13 12-1:30, Lane District meeting, 1195 City View,
laurel@holtintl.org
- 14 6:30, Private Practice Council, Chapter office
- 24 & 25 Leadership Retreat, Silver Falls, Sublimity,
(Board meeting on the 25th)

October

- 11 12-1:30, Lane District meeting, (see above)
- 12 6:30 Private Practice Council, Chapter office
- 21 8:45-4:30, "Prevention & Intervention Strategies with the
Violent Client" MOB West, Emanuel Hospital, Pdx, 6 hrs.
- 21 8:30-5, "Narrative & collaborative Approaches" Blues
Room, St. Anthony Hospital, Pendleton, 6 hrs pending

November

- 1 Deadline for winter newsletter
- 5 8:30-1, "Establishing/Maintaining Healthy Boundaries"
Room 1077, Emanuel Hospital, Portland. 3.5 hrs.
- 5 8:30-4:30, "LCSW Exam Preparation Workshop" MOB
East, Emanuel Hosp., Portland, 6 hrs.
- 9 6:30 Private Practice Council, Chapter office
- 18 8:30-4:30, "The Role and Uses of Intuition in Psychotherapy"
1700 Lorenzen, Emanuel Hospital, Portland. 6 hrs.
- 19 9-2:30, Board of Directors, Catholic Charities, 231 S.E.
12th St., Portland

"ETHICAL DECISION MAKING WITH DIFFICULT CASES: PRACTICAL GUIDELINES AND STRATEGIES FOR MINIMIZING RISK"

Frederic Reamer, MSW, PhD

An in-depth exploration of complex, challenging ethical dilemmas. A series of "hard" ethics cases, identify conflicting professional duties and obligations, and apply decision-making and risk-management protocols designed to protect clients, relevant third parties, and practitioners will be the focus. This will be an in-depth case discussion rather than a broad, introductory overview of ethical issues.

October 7, 2005

Bellevue Red Lion, Bellevue, WA

6 CEUs

**Register at www.nasw-wa.org or
contact NASW-WA at info@nasw-wa.org**



OREGON CHAPTER, NASW
7688 SW Capitol Highway
Portland, Oregon 97219

(503) 452-8420

PERIODICALS
POSTAGE
PAID
at Portland, Oregon

NASW — 24 HOURS A DAY
NATIONAL, WASHINGTON, D.C. TTD: (202) 336-8396
TOLL FREE DURING BUSINESS HOURS: 800-638-8799
OREGON CHAPTER, Portland: 503-452-8420
Fax: 503-452-8506 • 888-842-8420
www.nasworegon.org